

INTEGRITY PRODUCTS

Fire Plugz



Always wear appropriate PPE (personal protective equipment) which conforms to applicable work safe standards.



TOOLS REQUIRED



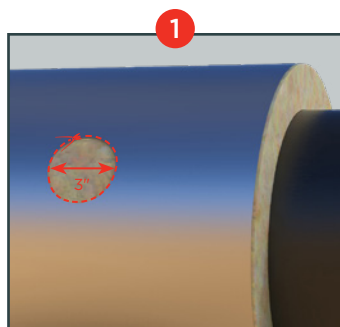
**TIN SNIPS
/HOLE SAW**



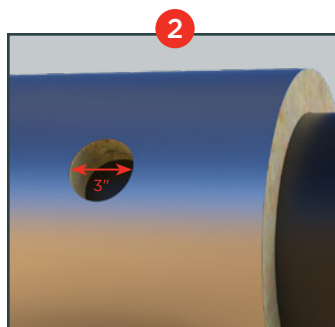
SEALANT
(FS-ONE or equivalent recommended)



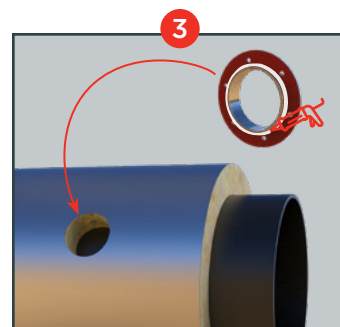
RIVETS



STEP 1
At the desired location on the metal jacketing mark a 3" circle and cut it out using tinsnips or an appropriate tool.

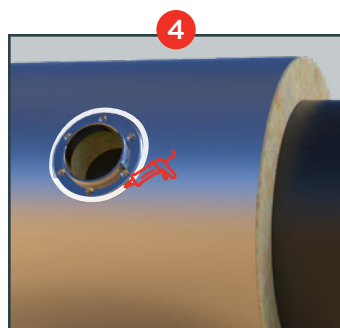


STEP 2
Core out a 3" diameter piece of insulation to the full thickness of the insulation to expose the pipe surface.

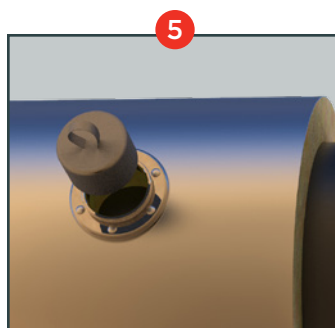


STEP 3
Apply a bead of sealant to the underside of the Fire Plug flange.

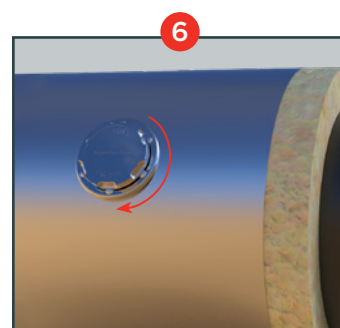
RECOMMENDED: FS-ONE or equivalent fire-rated sealant.



STEP 4
Place the Fire Plug Flange into position and drill 5mm holes into the metal cladding. Install the Fire Plug using SS rivets provided and secure it into place. Apply a bead of sealant around the circumference of the Fire Plug Flange.



STEP 5
Insert the specially designed insulation Pillow into the cored-out insulation.



STEP 6
Screw the metal cover onto the flange until tight and secure.