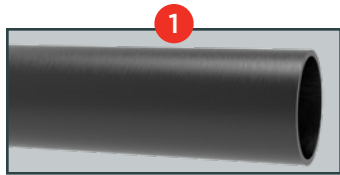
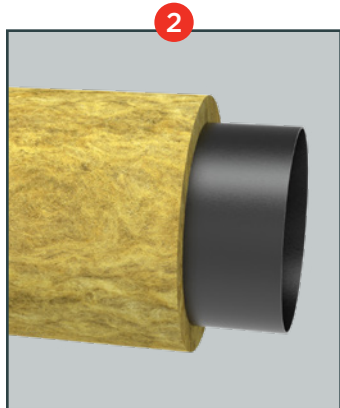


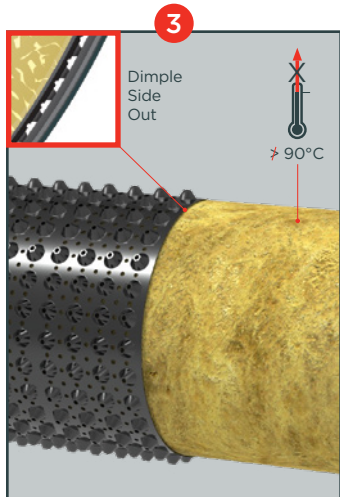
 Always wear appropriate PPE (personal protective equipment) which conforms to applicable work safe standards.



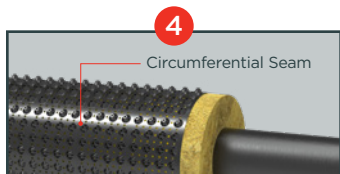
**STEP 1**  
**For Newer Installation Only**  
Ensure the pipe surface is clean, dry, and free of any damage, hazardous or sharp objects.



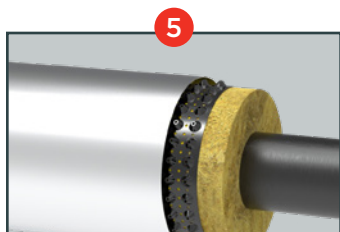
**STEP 2**  
**For Existing System**  
Label the existing jacketing for future traceability. Remove the metal jacketing via removal of bands, lap sealants and screws (if any) exposing the insulation. Secure the removed jacketing with proper identification.  
**For Newer Installation**  
Wrap the insulation over the pipe. No need for oversizing the insulation.



**STEP 3**  
Visually inspect the external surface of insulation for the evidence of any mechanical damage. Ensure the surface temperature on the exterior of insulation doesn't exceed 90°C (194°F). Install the perforated dimple sheets by wrapping around the insulation by either maintaining butt seam or overlap at longitudinal seam (please note the orientation of seam is not critical to this installation). Secure the dimple sheets around the insulation via wire or banding.

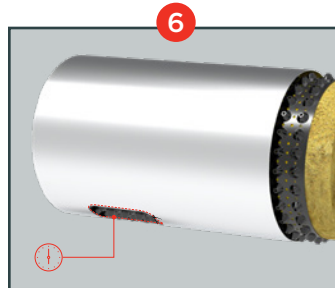


**STEP 4**  
Install the adjacent dimple wrap in the same manner following step 3 without overlapping the circumferential seams.

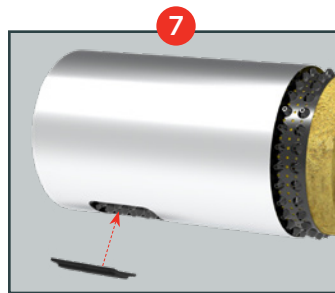


**STEP 5**  
Reinstall the metal jacketing and secure in place by banding and screwing (see note 1).  
*Note 1: Re-use the existing jacketing only if it has enough length to wrap around the increased circumference.*

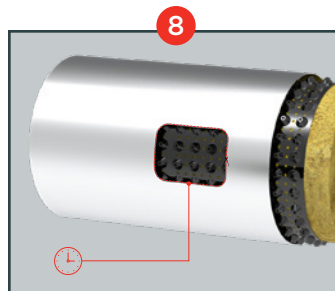
**TOOLS REQUIRED**



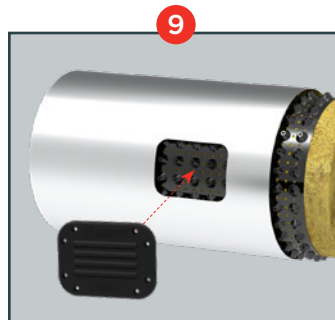
**STEP 6**  
Mark at intended location alongside 6 o'clock position of pipe using template. Cut the jacket using Tin Snips exposing the outer periphery of dimple wrap. Install the drain without cutting or removing corrugated wrap as well as insulation.



**STEP 7**  
Apply the silicone sealant on the backside of drain and place over the spot where jacketing was removed. Secure the drain in place via installation of screws. Install the next drain following same steps (recommended offset between adjacent drains: 6 mtr.).



**STEP 8**  
Mark at intended location alongside 3 o'clock position of pipe using template. Cut the jacket using Tin Snips exposing the outer periphery of dimple wrap. Install the vent without cutting or removing dimple wrap as well as insulation.



**STEP 9**  
Apply the silicone sealant on the backside of vent and place the vent over the spot where jacketing was removed. Secure the vent in place via installation of screws. Install the next vent at 9 o'clock position following same steps (recommended offset between adjacent vents: 6 mtr.).